



Introduction to Switch Products

道岔产品介绍

CONTENTS

目录



01

Company Advantages

公司优势

02

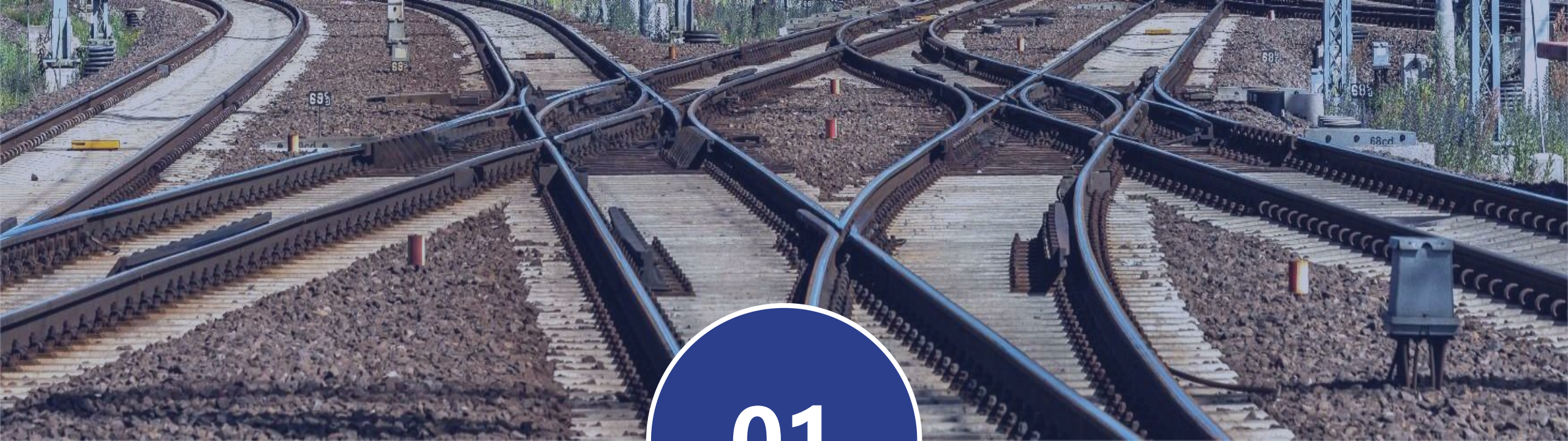
Product Introduction

产品介绍

03

Project

项目业绩



01

Company Advantages

公司优势

“

Our company produces various types of turnouts and turnout accessories, and also provides customers with high manganese steel frogs. We are able to research and design various non-standard turnouts according to customer requirements, wholeheartedly serving customers and meeting their needs.

我公司生产各种型号道岔和各种道岔配件，同时也为客户提供高锰钢辙叉，并能够根据客户的要求为客户研究设计各种非标道岔，全心全意服务客户，满足客户的需要。

”





Main production equipments 主要生产设备



Double planer CNC milling machine
双龙门数控铣机



Double spindle fixed beam planer type milling center
双主轴定梁龙门铣中心



6000T Presses
6000吨压力机



15m CNC drilling and milling machine
15米数控钻床铣床



Rail flash welding machine
钢轨闪光焊机



Vacuum negative pressure molding
V法负压造型



02

Product Introduction

产品介绍



Single High-Speed Turnout
单开高速道岔

60kg/m rail profile, No.42 movable-nose high-speed turnout
60kg/m钢轨42号可动心轨高速道岔

Straight speed: 350km/h
时速350公里

Total length: 157.2m
道岔全长157.2米

Side speed: 160km/h
侧向通过时速160公里

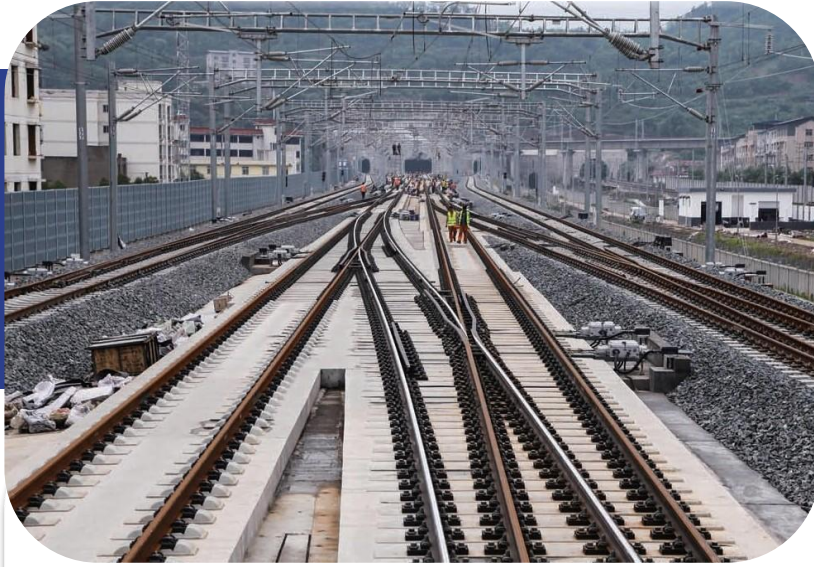
High-Speed Turnout 高速道岔



Single High-Speed Turnout 单开高速道岔

60kg/m rail profile, No.18 movable-nose
high-speed turnout
60kg/m钢轨38号可动心轨高速道岔

Straight speed: 200km/h
时速200公里



Single High-Speed Turnout 单开高速道岔

60kg/m rail profile, No.18 movable-nose
high-speed turnout
60kg/m 钢轨18号可动心轨高速道岔

Straight speed: 350km/h Side speed:80km/h
时速350公里 侧向通过时速80公里



Single High-Speed Turnout 单开高速道岔

60kg/m rail profile, No.38 movable-nose
high-speed turnout
60kg/m钢轨38号可动心轨高速道岔

Straight speed: 250km/h
时速250公里

Heavy-load Turnout 重载道岔



Single Heavy-load Turnout
单开重载道岔

75kg/m rail profile, No.18 heavy-load turnout
for 27tons and below axle load
27吨轴重 75kg/m 钢轨18号单开道岔



Single Heavy-load Turnout
单开重载道岔

75kg/m rail profile, No.12 heavy-load turnout
for 25tons and below axle load
25吨轴重 75kg/m 钢轨12号单开道岔



Heavy-load Turnout 重载道岔



Single Heavy-load Turnouts 单开重载道岔

60kg/m rail profile, No.18 heavy-load turnout
for 27tons and below axle load
27吨轴重 60kg/m 钢轨18号单开道岔



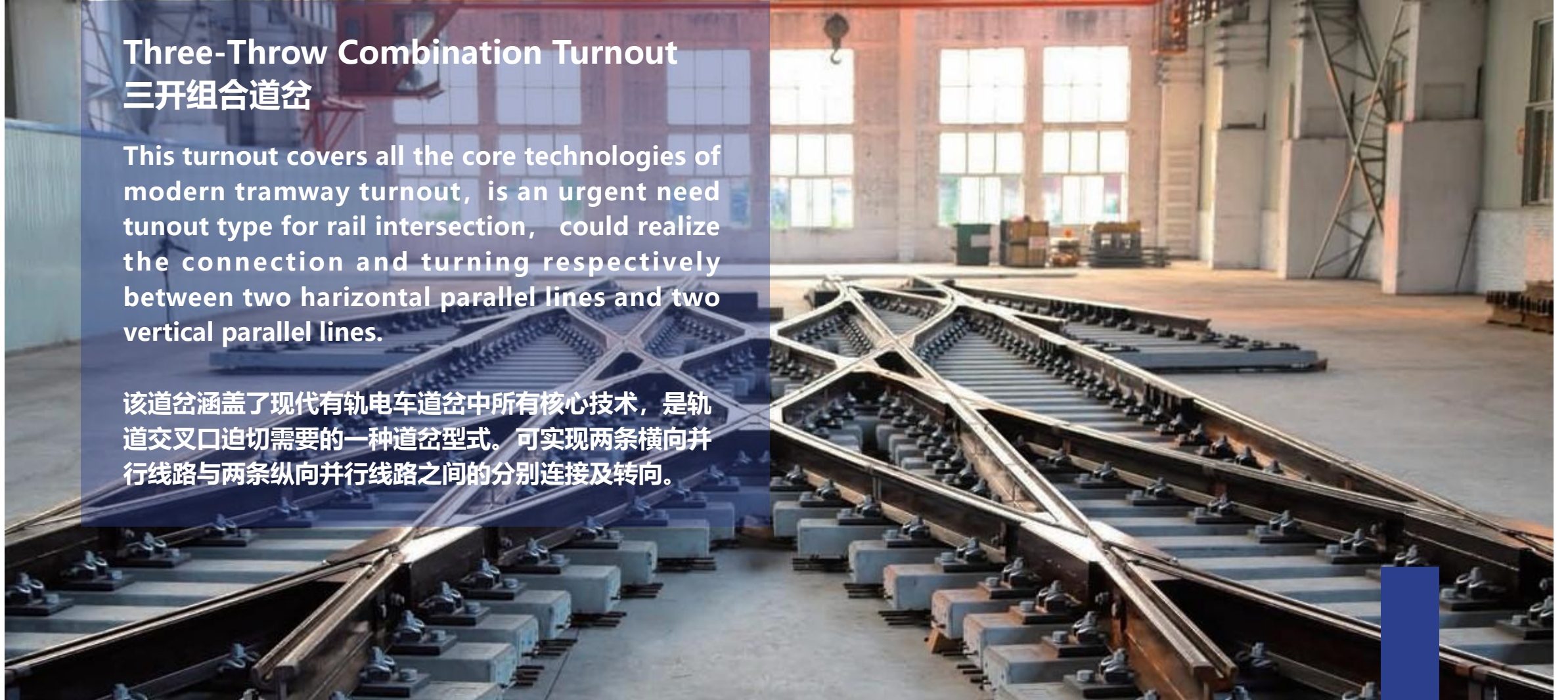
Single Heavy-load Turnouts 单开重载道岔

75kg/m rail profile, No.12 heavy-load turnout
for 30tons and below axle load
30吨轴重 75kg/m 钢轨12号单开道岔

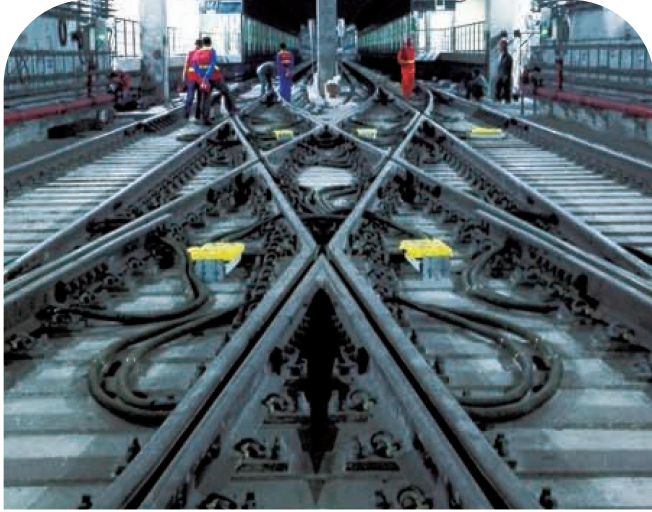
Three-Throw Combination Turnout 三开组合道岔

This turnout covers all the core technologies of modern tramway turnout, is an urgent need turnout type for rail intersection, could realize the connection and turning respectively between two horizontal parallel lines and two vertical parallel lines.

该道岔涵盖了现代有轨电车道岔中所有核心技术，是轨道交叉口迫切需要的一种道岔型式。可实现两条横向并行线路与两条纵向并行线路之间的分别连接及转向。



Metro Turnout 地铁道岔



Double Slip Turnout
复式交分道岔



Double Slip Turnout
复式交分道岔



Double Slip Turnout
复式交分道岔



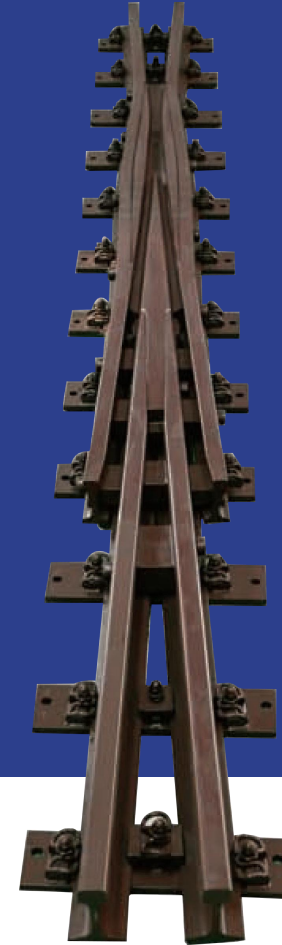


High Manganese Steel Frog 高锰钢辙叉

High Manganese Steel Assembled Frog 高锰钢拼装辙叉

The core of major structure of high manganese steel assembled frog is the manganese steel frog heart with part of wing rail, and bolted with standard wing rail and frog heel end rail through high-strength bolts connect sets.

高锰钢拼装辙叉其主体结构核心为含部分翼轨的锰钢叉心,通过高强度螺栓副与标准钢轨翼轨及叉跟轨栓接拼装组合而成。





03

Project
项目业绩

Area 地区	Year 日期	Technical Standard 技术标准	Product Type 产品类型
Malaysia 马来西亚	2010	UIC54	74 Pcs Crossover Turnout 74件交叉渡线道岔
Thailand 泰国	2011	UIC60	48 Sets Turnouts 48组道岔
Australia 澳大利亚	2012	UIC60	33 Pcs Crossover Turnout 33件交叉渡线道岔
Hong Kong 香港	2013	UIC54 UIC60	40 Sets Turnouts 40组道岔 219 Pcs Crossover Turnout 219件交叉渡线道岔
Australia 澳大利亚	2014	UIC60	31 Pcs Crossover Turnout 31件交叉渡线道岔
Hong Kong 香港	2014	UIC54 UIC60	25 Sets Turnouts 25组道岔 32 Pcs Crossover Turnout 32件交叉渡线道岔
Thailand 泰国	2015	50kg/m, U75V	7 Sets Turnouts 7组道岔